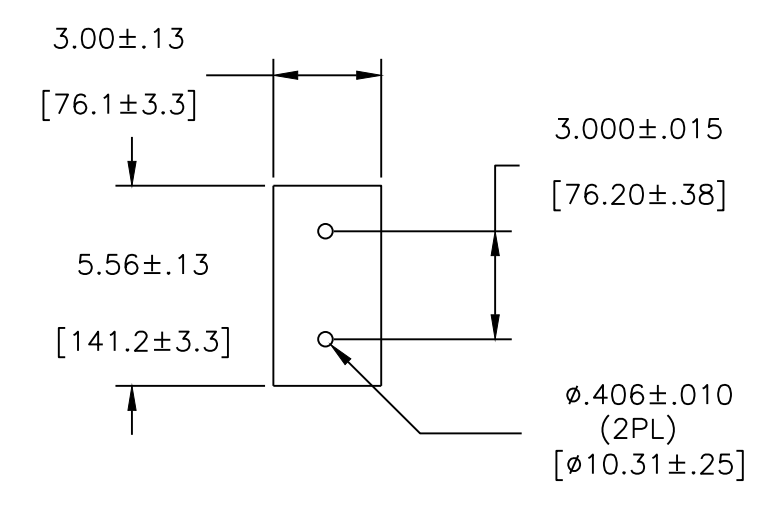
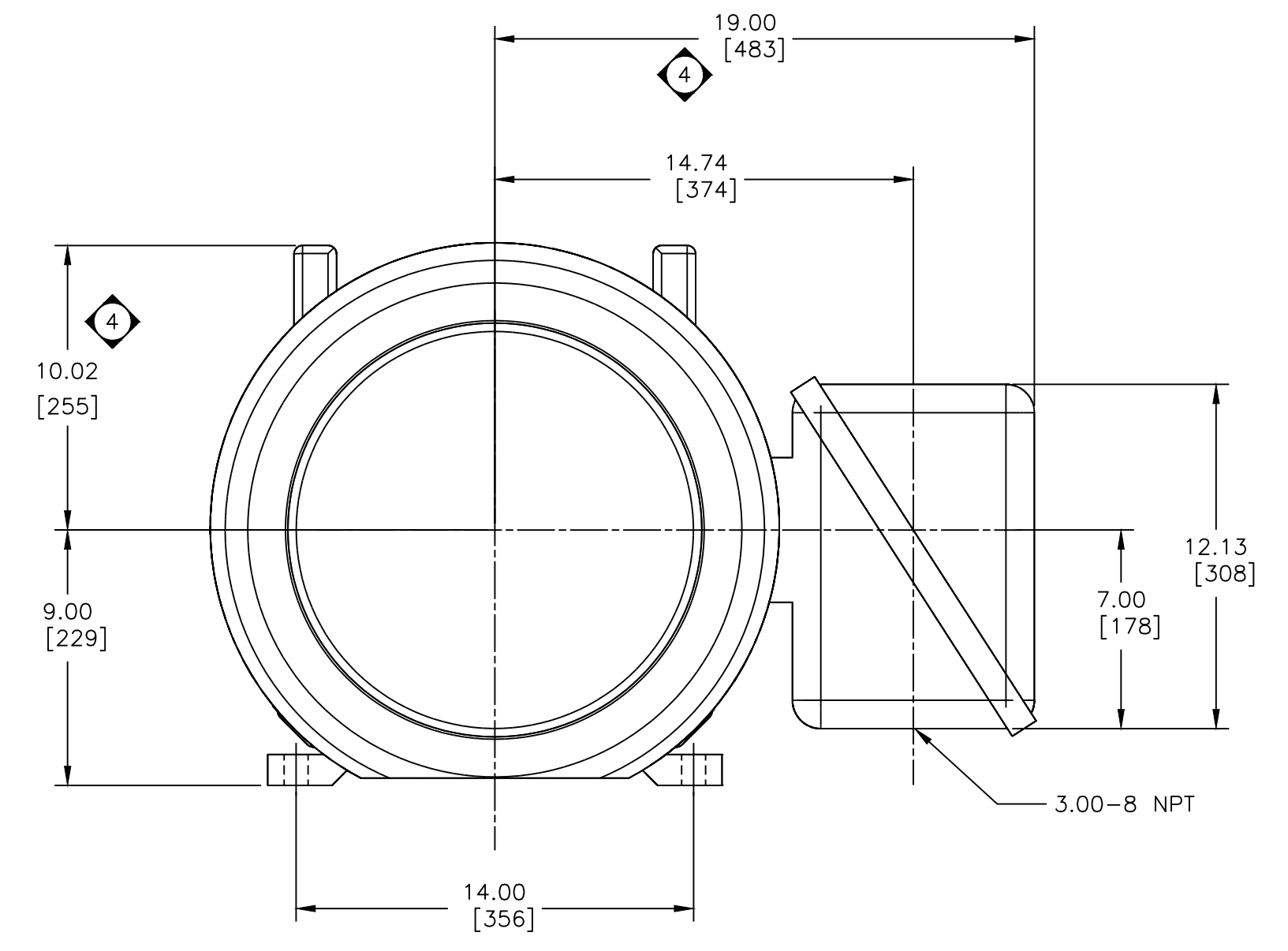
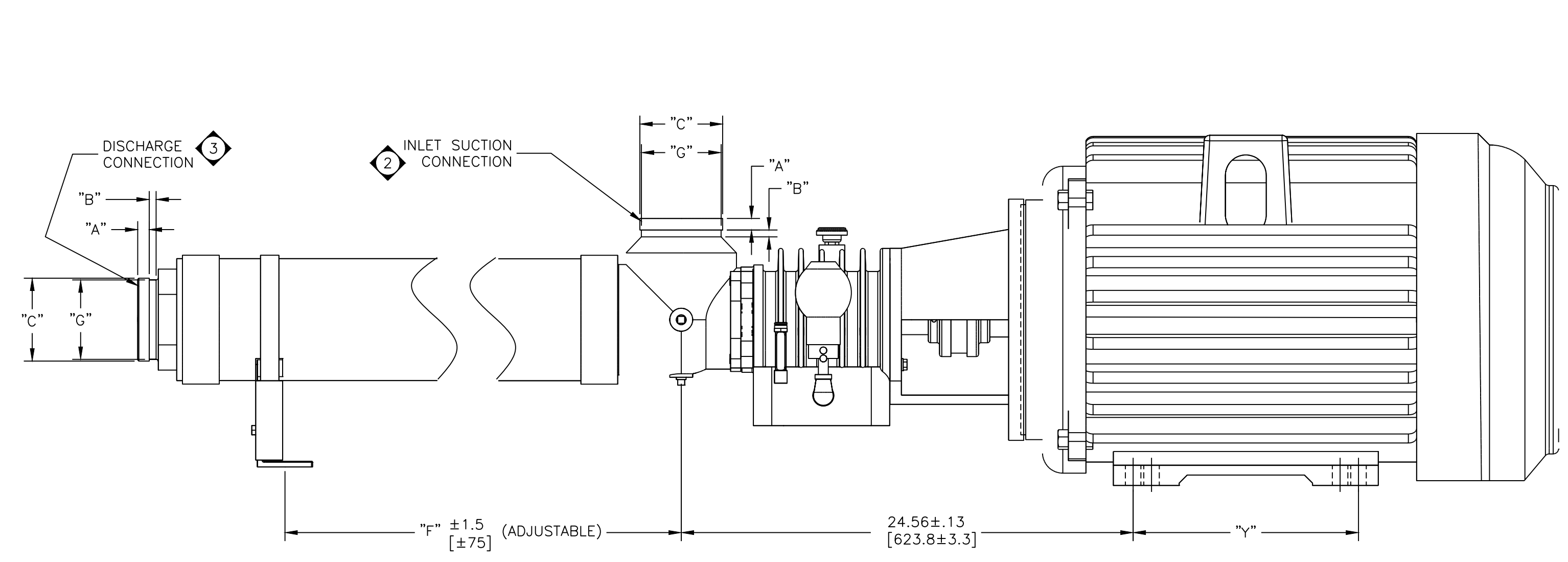
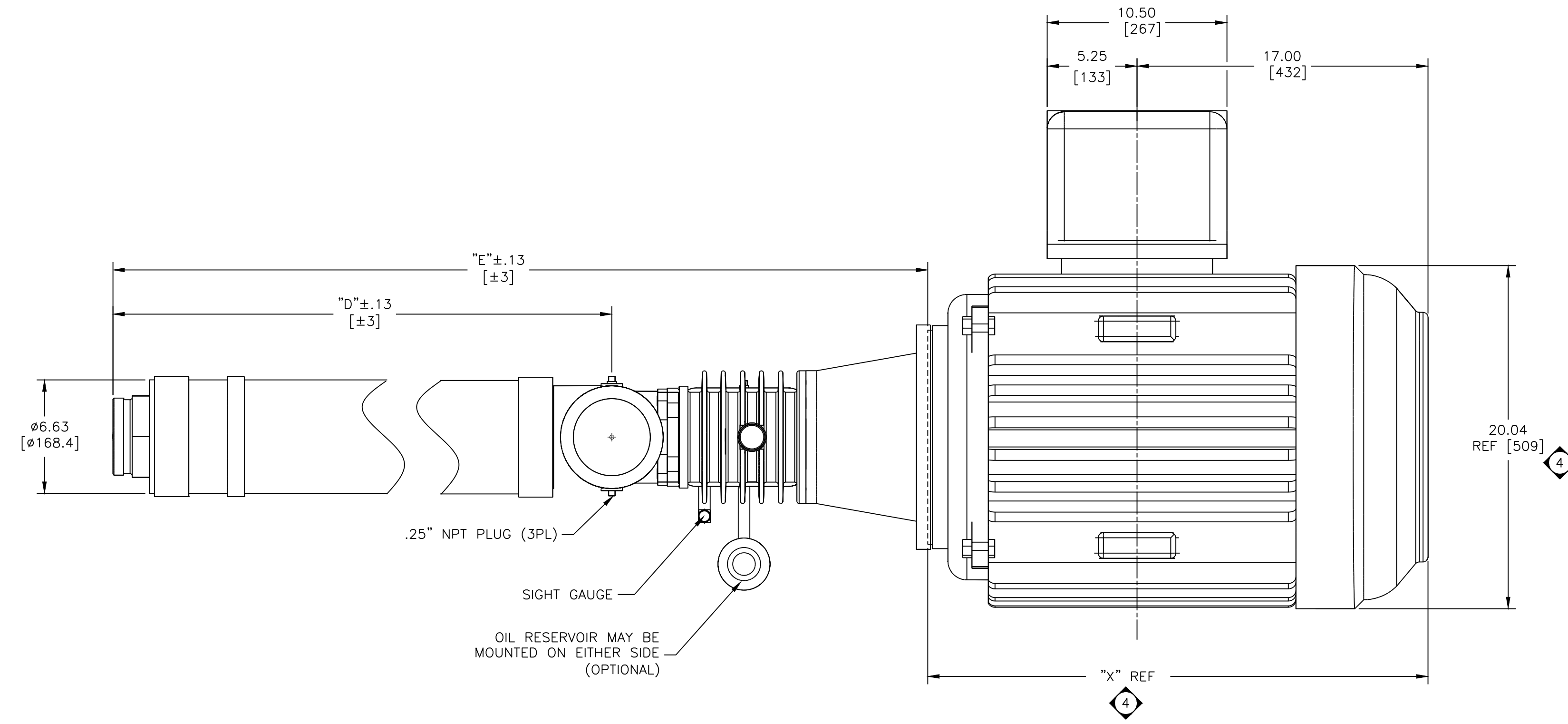


NOTES:

1. DIMENSIONS ARE IN INCHES [MILLIMETERS].
2. 406XX PUMP MODELS MATE WITH 6-INCH VICTAULIC TYPE CLAMPED UNION. 404XX PUMP MODELS MATE WITH 4-INCH VICTAULIC TYPE CLAMPED UNION. 4-INCH SIZE INLET IS SHOWN. INLET MAY BE ROTATED IN 90° INCREMENTS. SEE TABLES FOR VICTAULIC DIMENSIONS.
3. PUMP DISCHARGE CONNECTIONS MATE WITH 4-INCH VICTAULIC TYPE CLAMPED UNION.
4. TEFC GENERAL ELECTRIC 365TSC MOTOR SHOWN, MOTOR DIMENSIONS WILL VARY WITH MANUFACTURER AND ARE SHOWN FOR REFERENCE ONLY.
5. PUMP AND MOTOR ADAPTER WILL ACCEPT NEMA 364/365TSC FRAMES 3600 RPM ELECTRIC MOTOR AND A WOODS OR DODGE FLEXIBLE COUPLING WITH THE END OF THE PUMP DRIVE SHAFT. THE 364/365TSC FRAME MOTORS MUST HAVE A BASE AND BE RIGIDLY MOUNTED. MOUNTING OF BEARING FRAME BASE IN A STRAIN-FREE MANNER IS OPTIONAL WITH 364/365TSC FRAME MOTORS.
6. SEE PUMP INSTRUCTIONS P/N 1125317 FOR ADDITIONAL INFORMATION ON INSTALLATION, STARTUP, AND MAINTENANCE.
7. FOR REPRINTS OF THIS DRAWING, ORDER MATERIAL NO. 1225754.



MOTOR SIZE	"X"		"Y"	
	INCHES	[MM]	INCHES	[MM]
364TSC	29.27	743	11.25	285
365TSC	29.27	743	12.25	311

MODELS		"D"		"E"		"F"	
60HZ	50HZ	INCHES	[MM]	INCHES	[MM]	INCHES	[MM]
AS40406KZE/AS40606KZE		41.36	1051	59.76	1518	35.34	898
AS40407KZE/AS40607KZE		46.40	1179	64.82	1646	40.40	1026
AS40409KTE/AS40609KTE	AS40409KTE/AS40609KTE	56.49	1435	74.91	1903	50.49	1283
	AS40410KTE/AS40610KTE	61.54	1563	80.46	2044	55.54	1411

VICTAULIC® DIMENSIONS STANDARD 4" DISCHARGE CONNECTIONS				VICTAULIC® DIMENSIONS STANDARD 6" INLET CONNECTION			
ITEM	INCHES	MILLIMETERS		ITEM	INCHES	MILLIMETERS	
"A"	.625±.031	15.88±.78		"A"	.625±.031	15.88±.78	
"B"	.375±.031	9.53±.78		"B"	.375±.031	9.53±.78	
"C"	4.500 ^{+.045} _{-.031}	114.30 ^{+.114} _{-.78}		"C"	6.625 ^{+.063} _{-.031}	168.28 ^{+.160} _{-.78}	
"G"	4.334 ^{+.000} _{-.020}	110.08 ^{+.00} _{-.51}		"G"	6.455 ^{+.000} _{-.022}	163.96 ^{+.00} _{-.56}	

REV	DESCRIPTION	ECO	DWN	APPR	APPR	DATE
B	SUEZ REBRANDING					19 Oct 18
A	INITIAL RELEASE	5214				

TOLERANCES UNLESS NOTED
 DECIMALS .X +/- .1
 ANGLES +/- 2°
 FRACTIONAL .XX +/- .03
 N/A
 .XXX +/- .010



CUSTOMER INFORMATION		DRAWING NUMBER		REVISION	
DWG,TF,OUTLINE,AS40000KTE/KZ		1202831		B	
364/365TSC NEMA MOTOR		DOC. OWNER:		PROJECT NO.	
		1225754		SCALE 3:16	
		SIZE D		SHEET 1 OF 1	